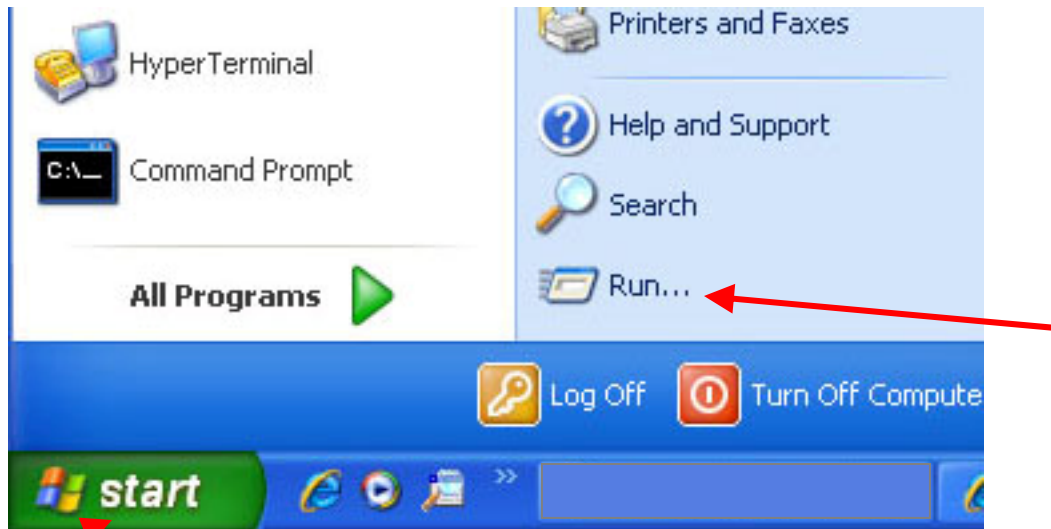


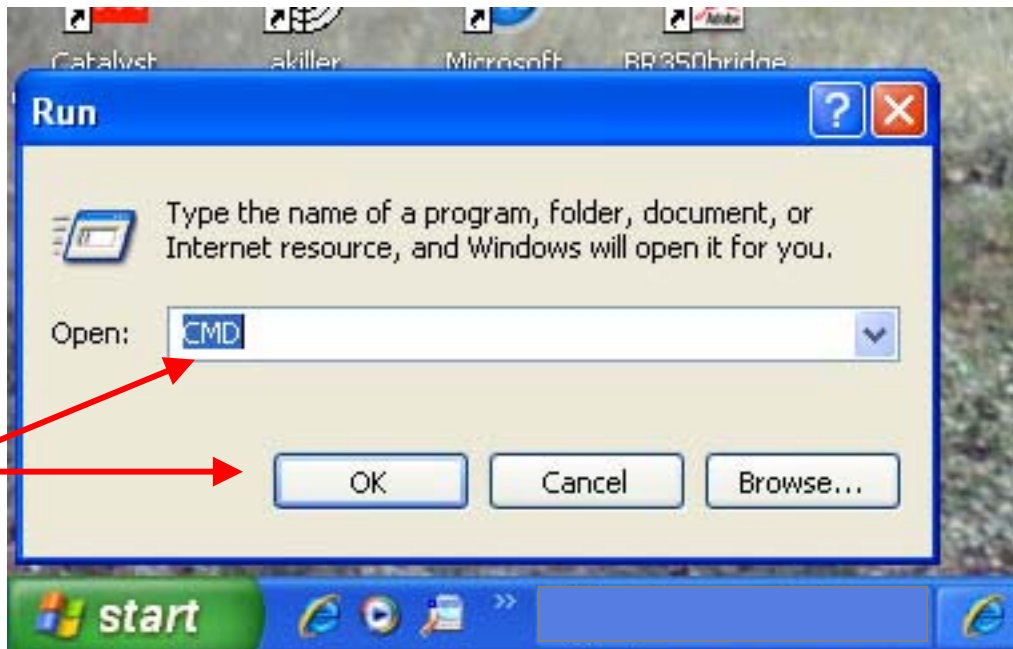
*MAC address acquisition  
(Windows XP, Home or Pro and Vista)*

**Windows XP (all) Go to START, RUN.**

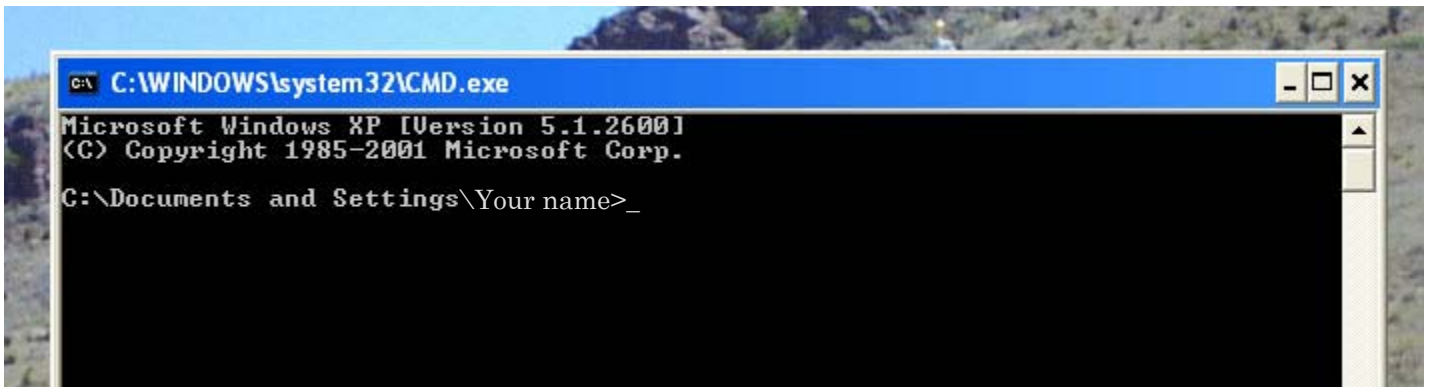
**Windows Vista go to START, START SEARCH**



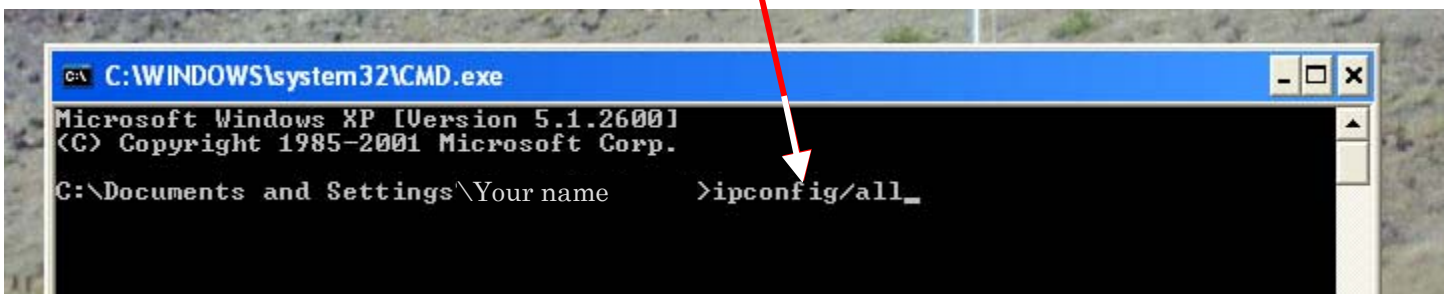
**Type CMD in the window that comes up, press OK**



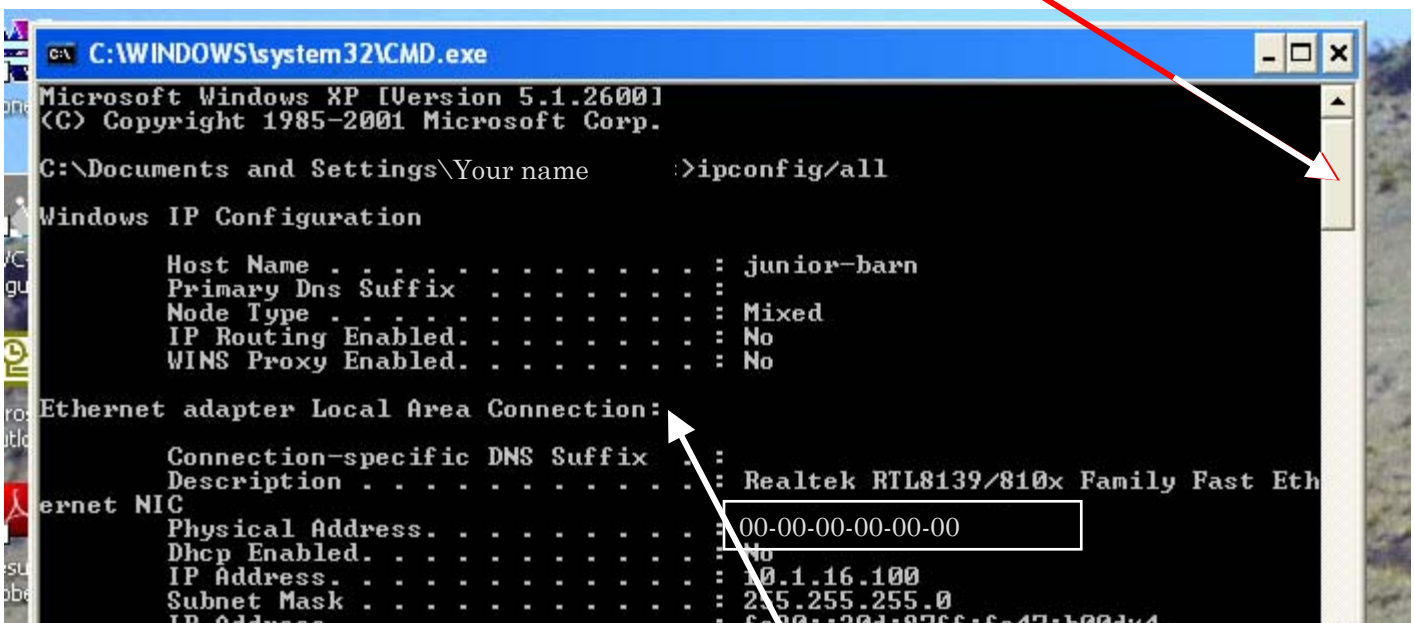
This screen will appear



Type **ipconfig/all**, then press **Enter** key

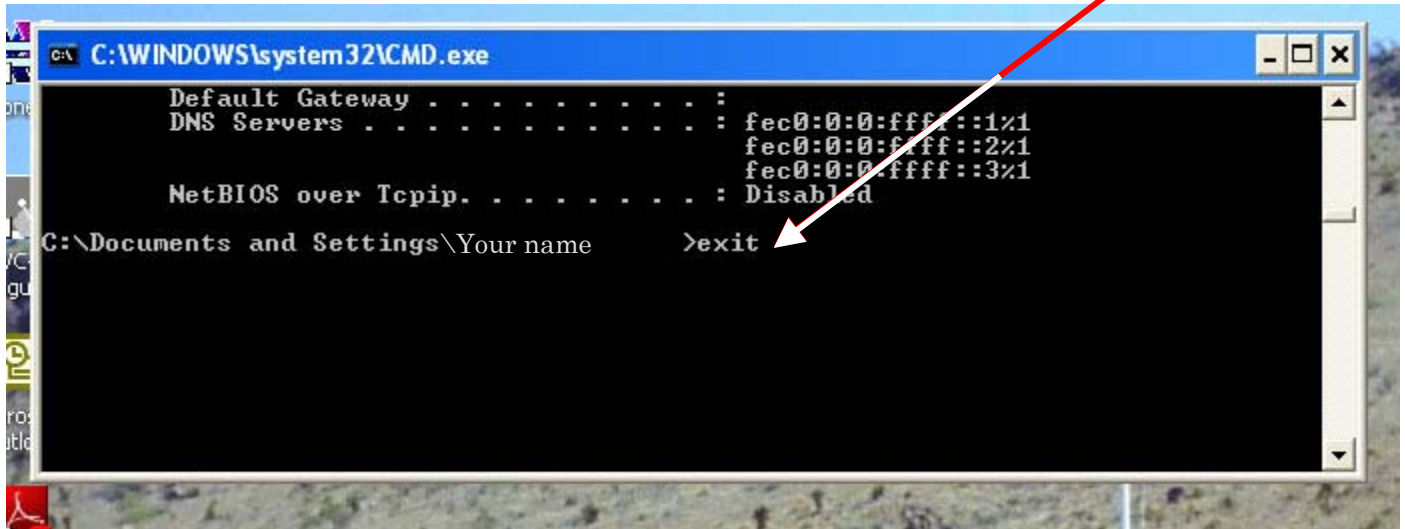


A screen like this will appear – you will need to scroll back to the top



The MAC address of the computer that you will be using to connect To the Mountain Zone wireless service is the MAC that is Required. This will typically be the Ethernet adapter Local AreaConnection. The boxed area will be the MAC number. There Will be 12 characters in two character sets separated by dashes. That Is all that is needed from this page.

To get out of the DOS window, scroll to the bottom and type **Exit**  
And then hit the **Enter** key.



```
C:\WINDOWS\system32\CMD.exe
Default Gateway . . . . . :
DNS Servers . . . . . : fec0:0:0:fff::1%1
                        fec0:0:0:fff::2%1
                        fec0:0:0:fff::3%1
NetBIOS over Tcpip. . . . . : Disabled
C:\Documents and Settings\Your name >exit
```

This will close the DOS window and you have the number  
You need to provide Mountain Zone.